

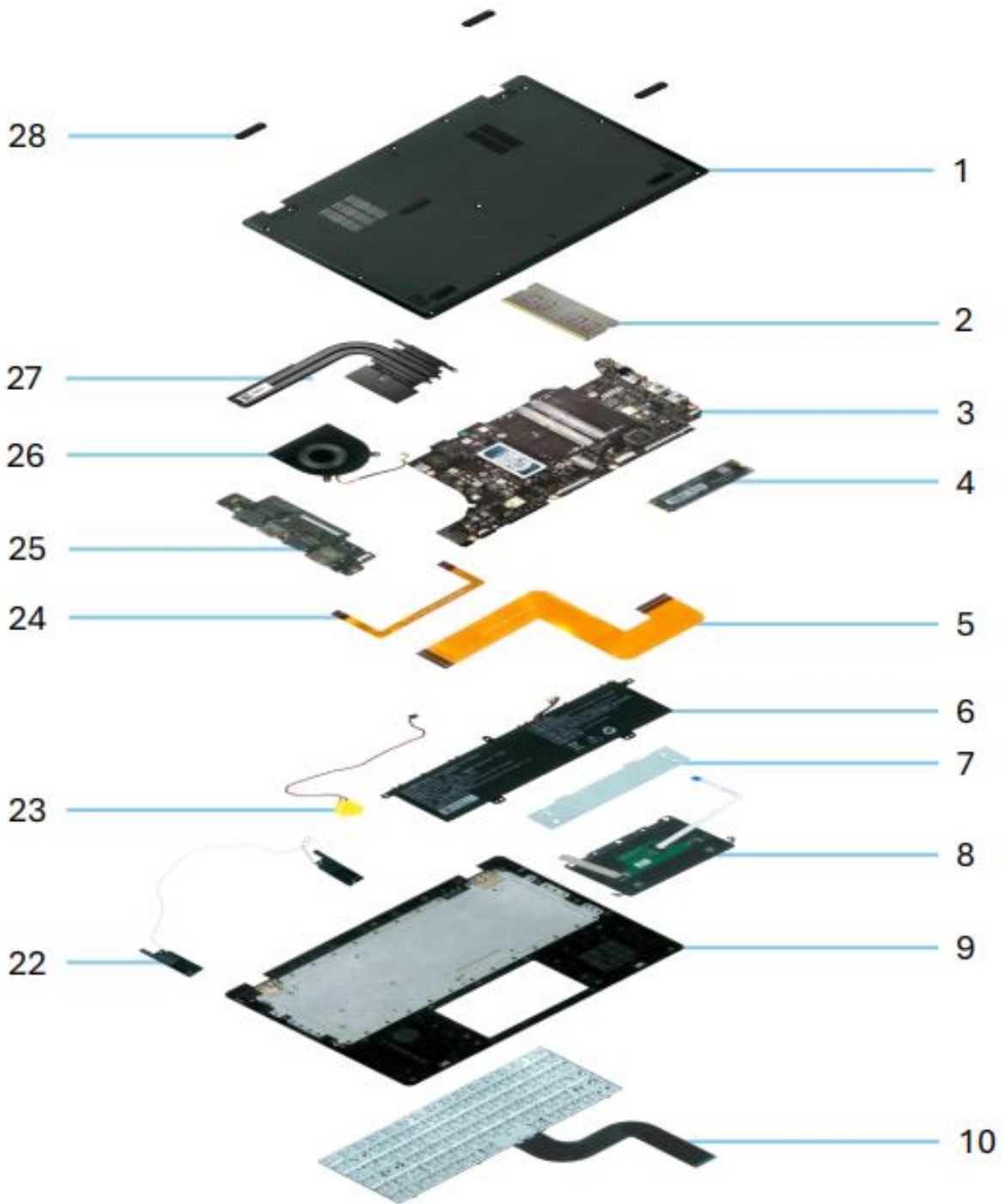
T160 Dismantling Process and Special Handling Needs

Notebook

No.	Name	Quantity	Annex VII Materials	Page
1	Battery	1	Batteries	2
2	Button Battery	1	Batteries	3
3	RAM	1	Printed Circuit Assemblies > 10 cm ²	3
4	RAM	1	Printed Circuit Assemblies > 10 cm ²	3
6	Main Board	1	Printed Circuit Assemblies > 10 cm ²	5
8	Keyboard	1	Printed Circuit Assemblies > 10 cm ²	6
9	Touchpad	1	Printed Circuit Assemblies > 10 cm ²	7
7	IO board	1	Printed Circuit Assemblies > 10 cm ²	8
10	LCD	1	LCD's > 100 cm ²	9
11	Camera	1	Printed Circuit Assemblies > 10 cm ²	10

Adapter

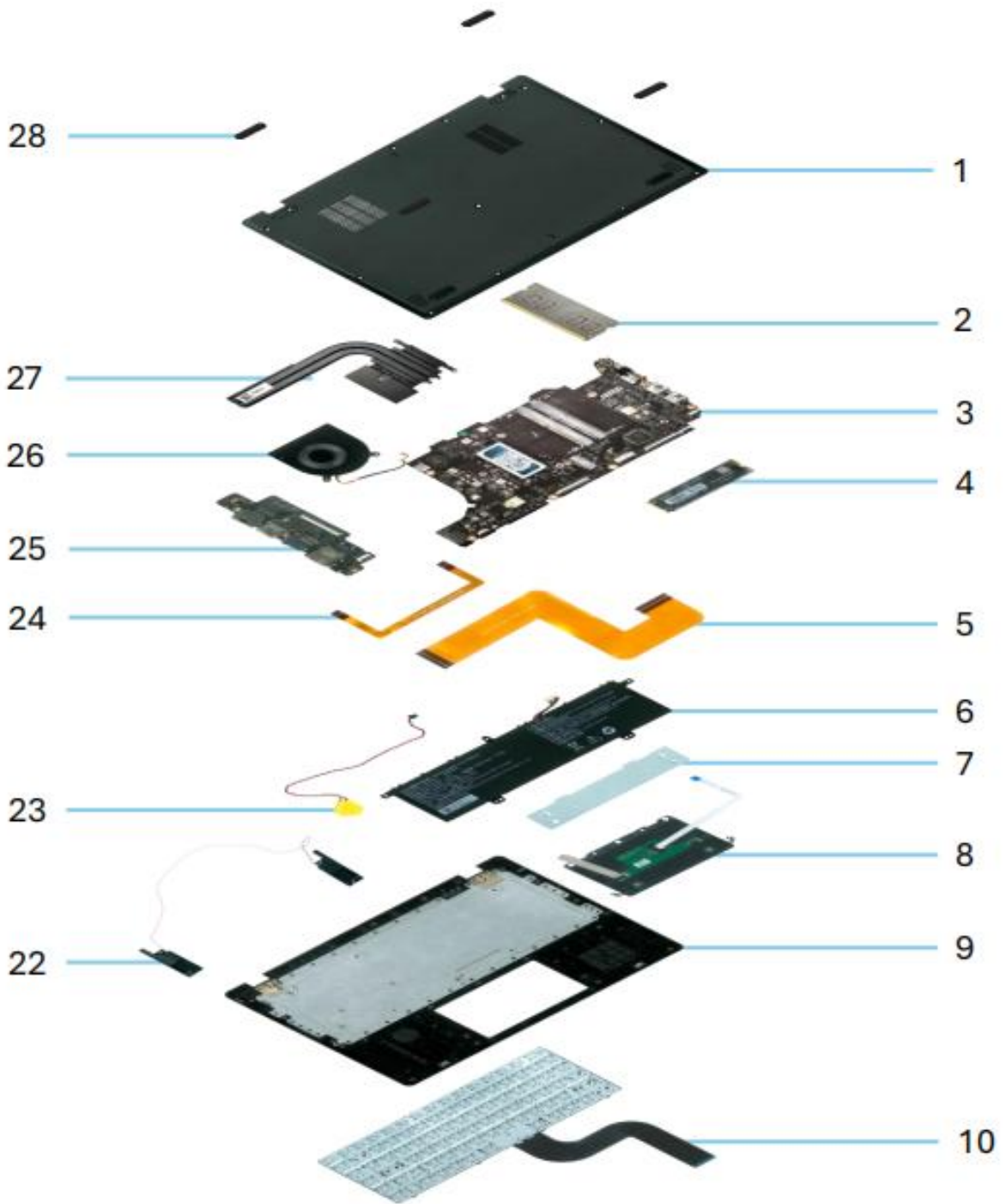
No.	Name	Quantity	Annex VII Materials	Page
1	PCB	1	Printed Circuit Assemblies > 10 cm ²	11
2	Cable	1	External Electric Cables	12
3	Capacitor	1	Electrolite Capacitors over 2.5 cm high & diameter	13



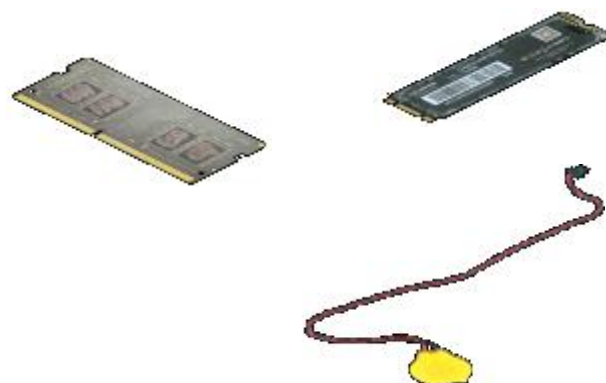
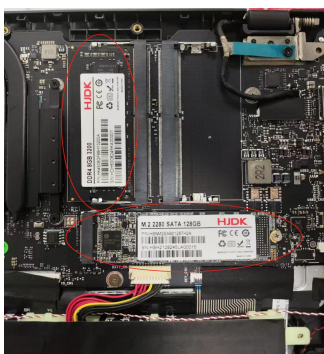
Separate 1: Unscrew all screws(11pcs) to take out the Part 1.

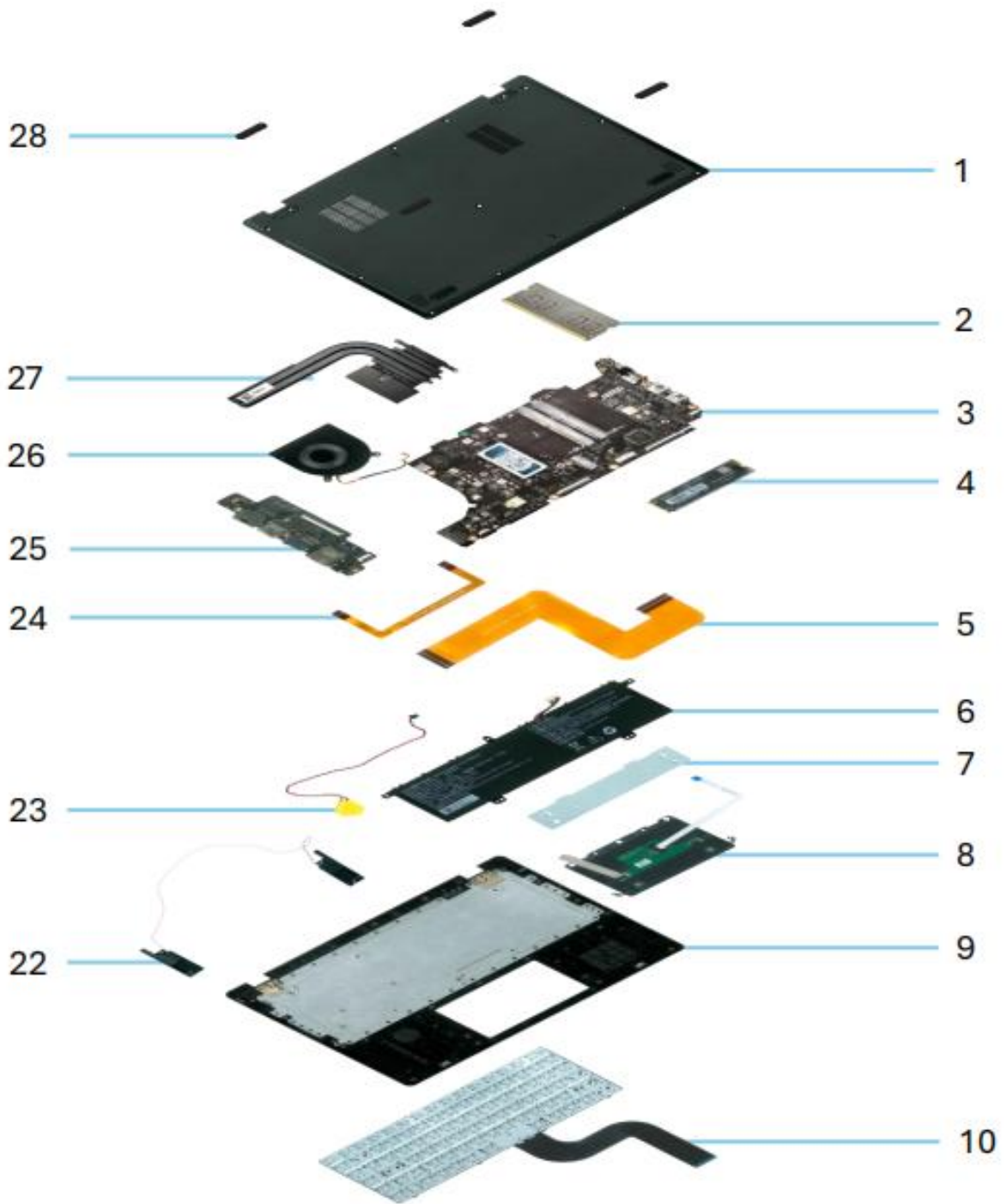
Separate 2: Unscrew all screws(2pcs) and unplug the cable to take out the Part 6.





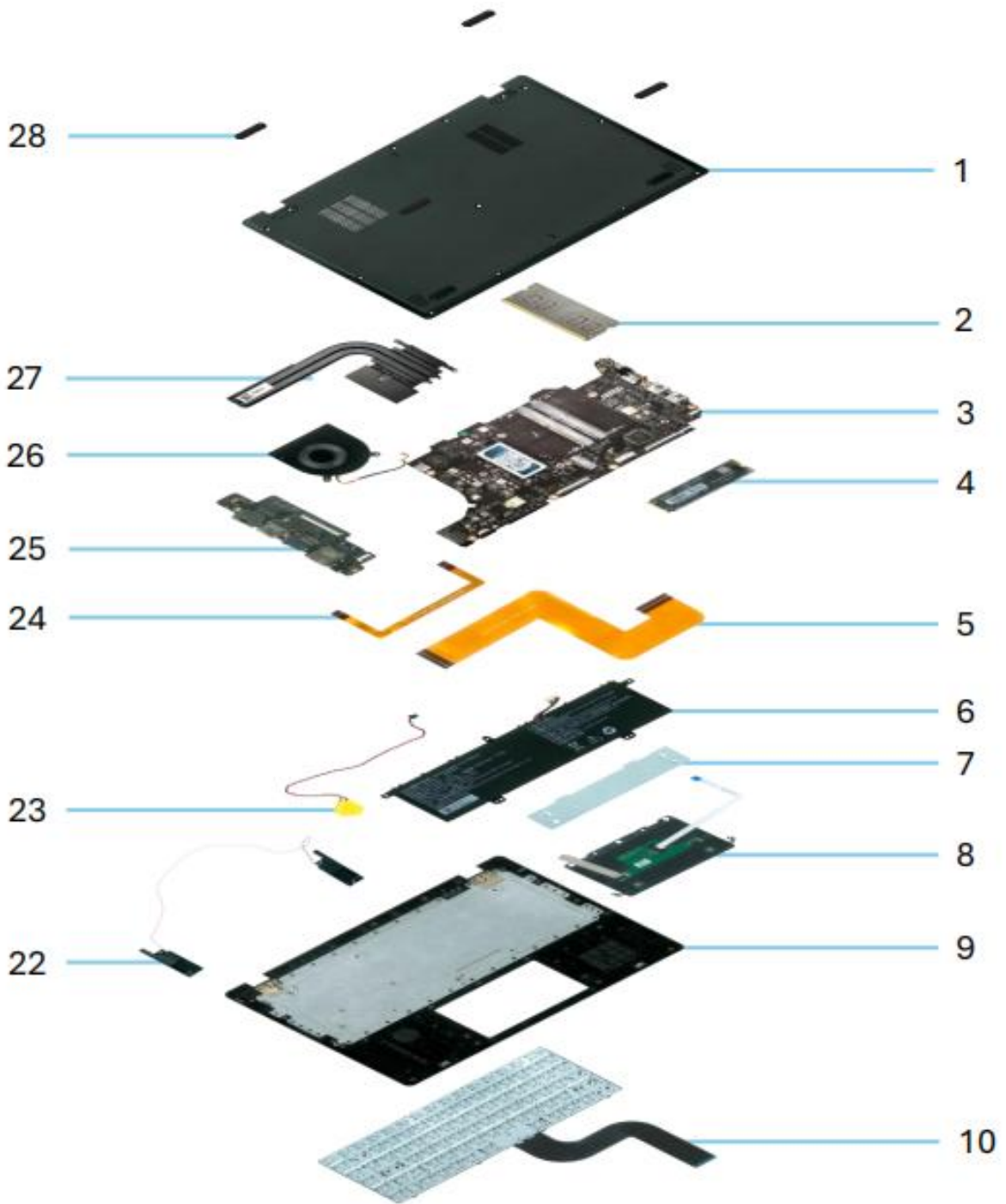
Separate 3: Unscrew all screws(1pcs) to take out the Part 2 and Part 4.





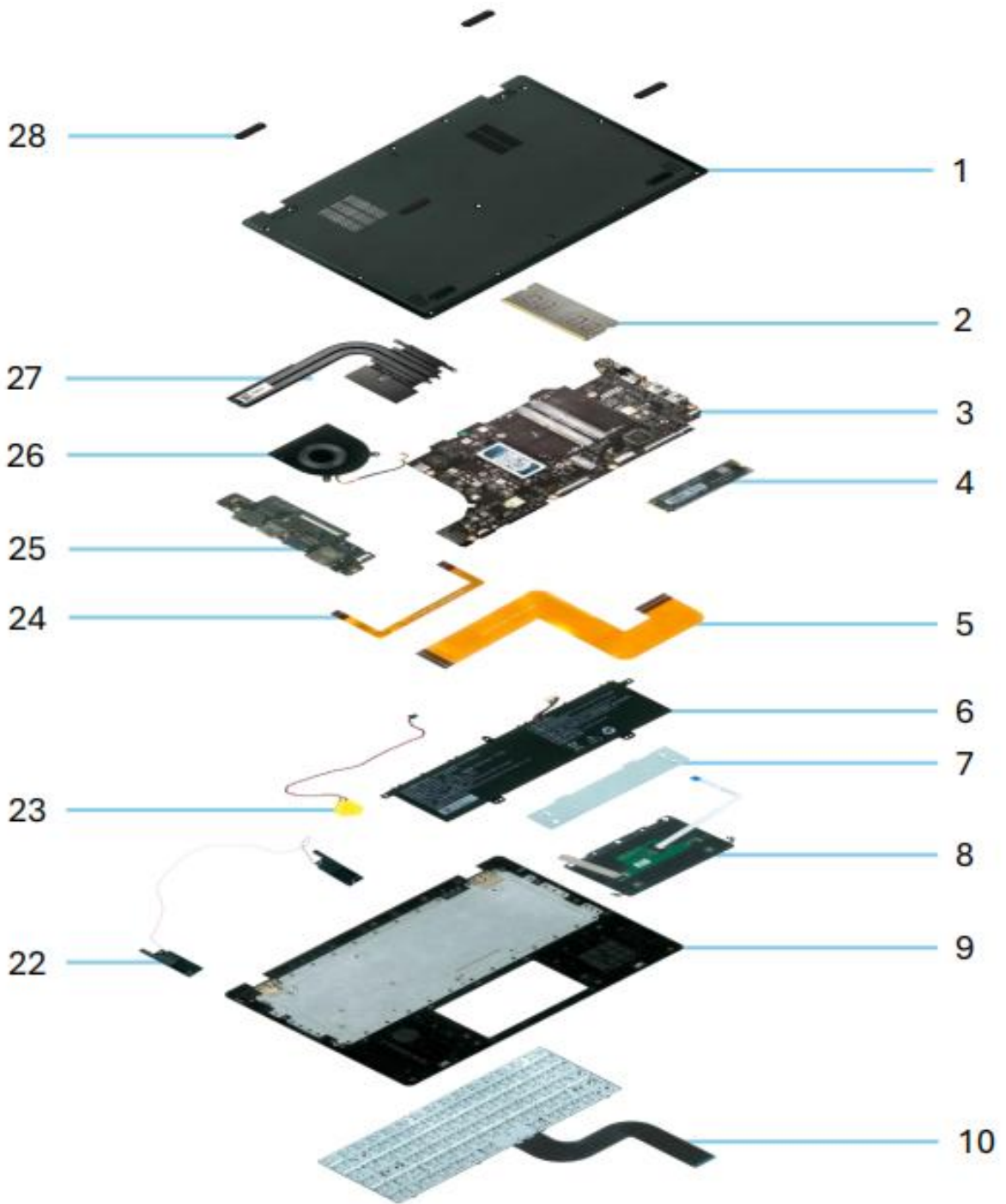
Separate 4: Unscrew all screws(3pcs) to take out the Part 26.



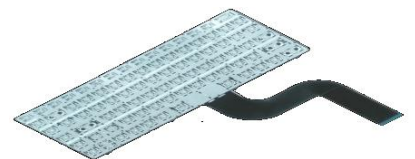


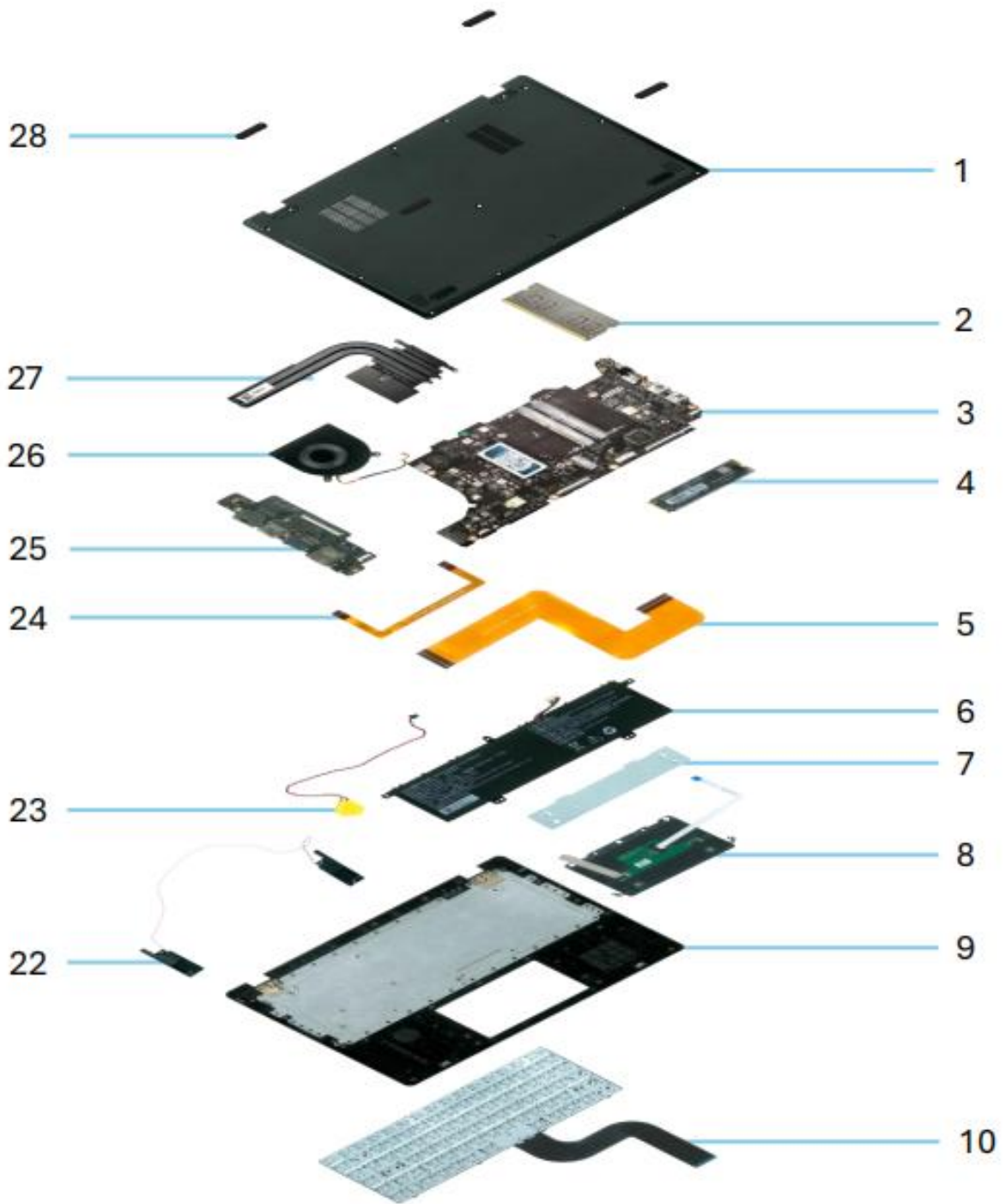
Separate 5: Unscrew all screws(6pcs) and unplug the cables to take out the Part 3.



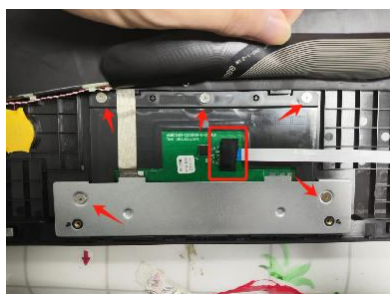


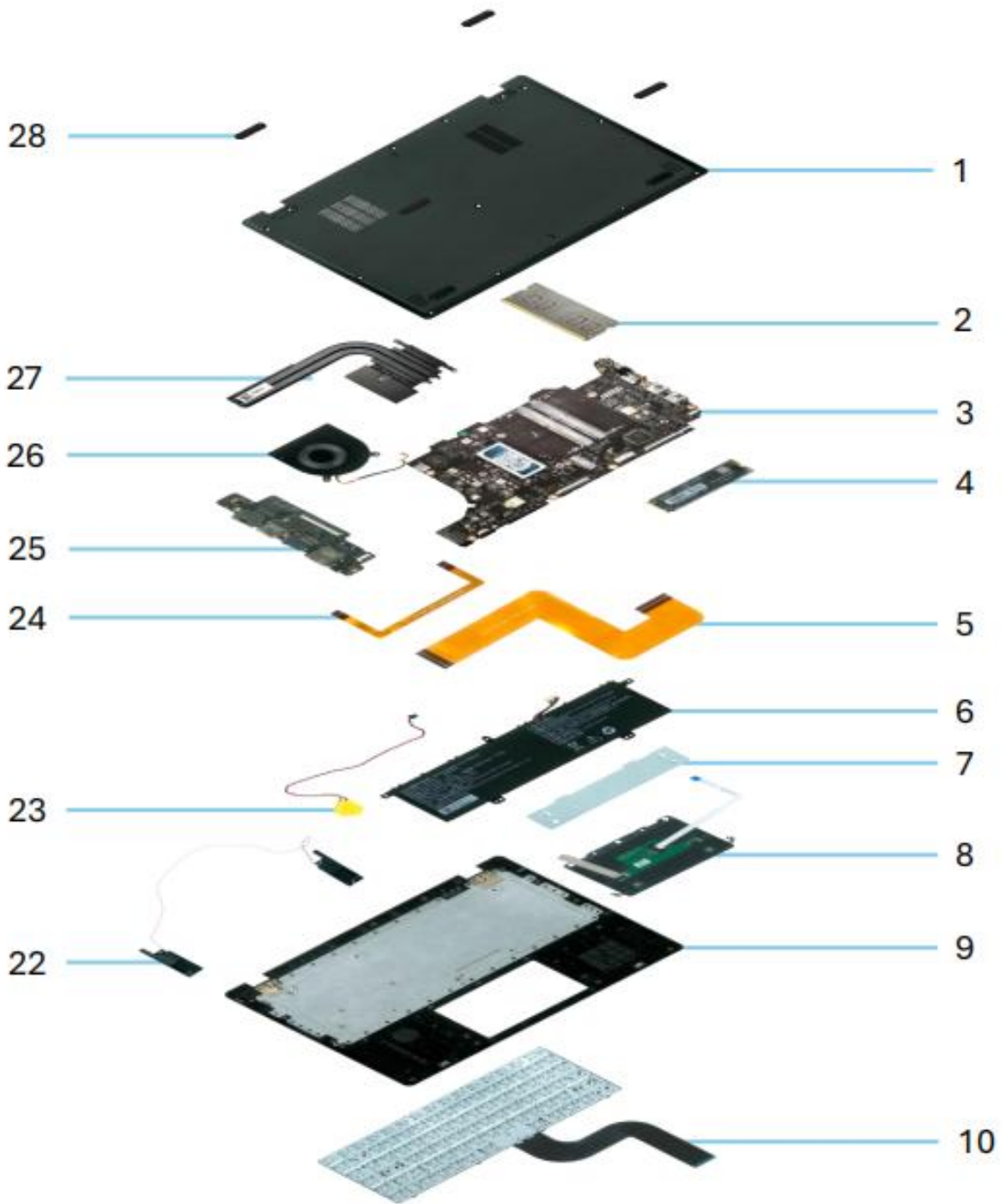
Separate 6: Unscrew all screws(2pcs) to take out the Part 10.



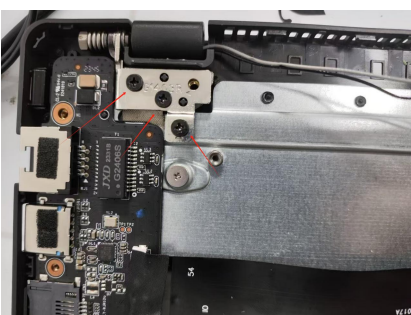


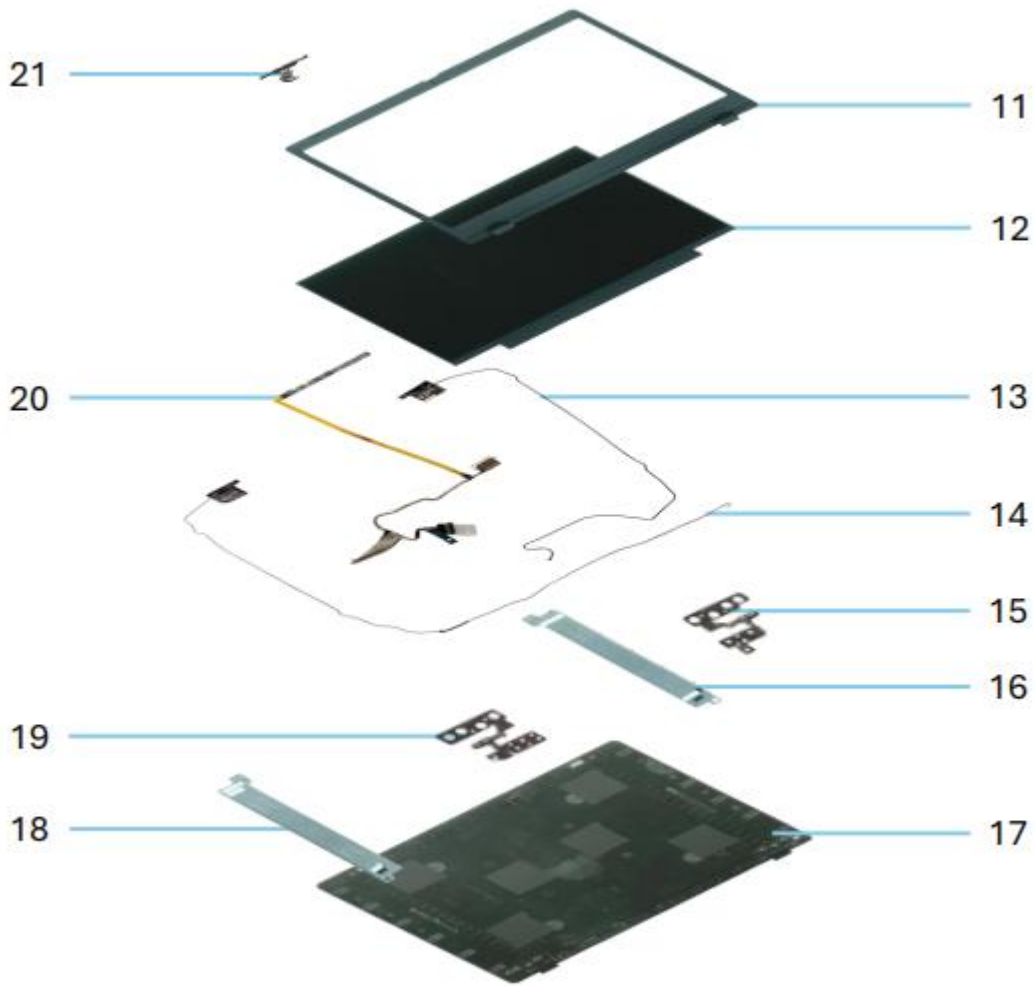
Separate 7: Unscrew all screws(5pcs) and unplug the keyboard cable to take out the Part 8.





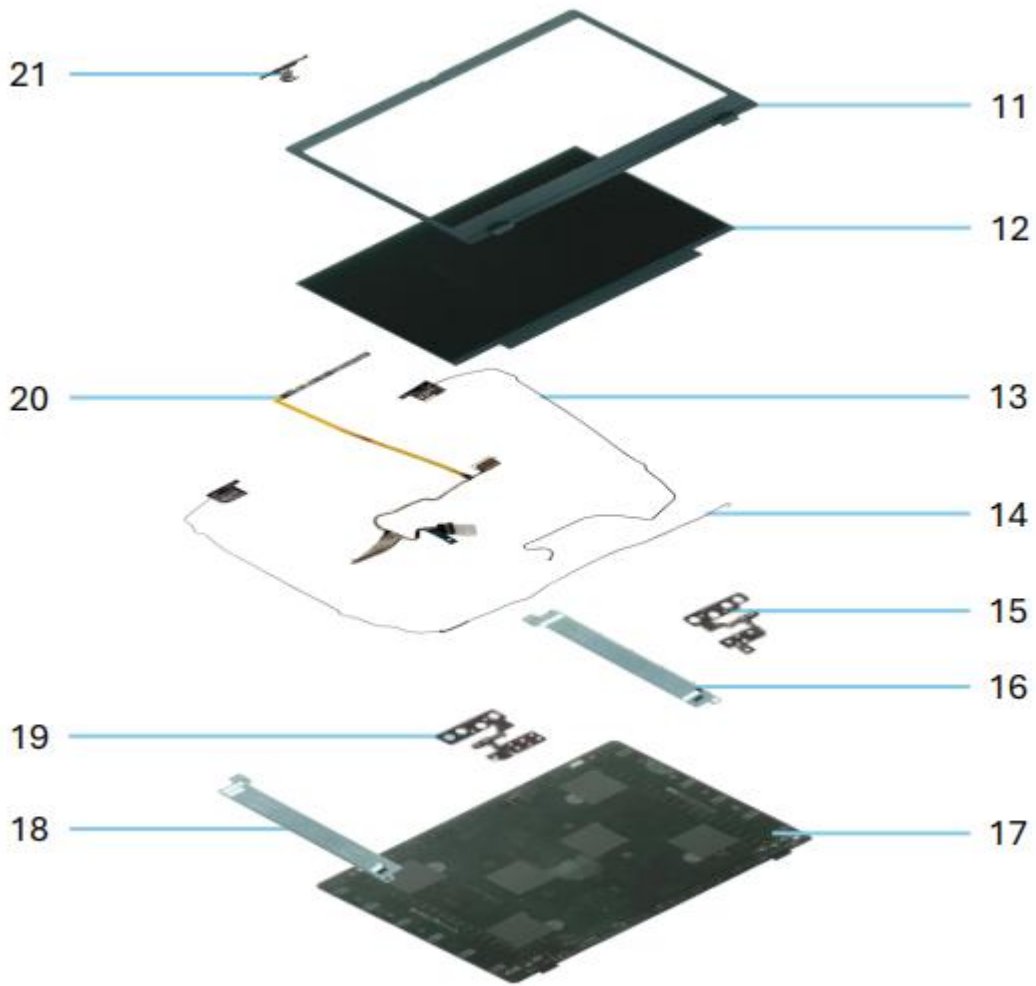
Separate 8: Remove Part 9, unscrew all screws(3pcs) to take out the Part 25.





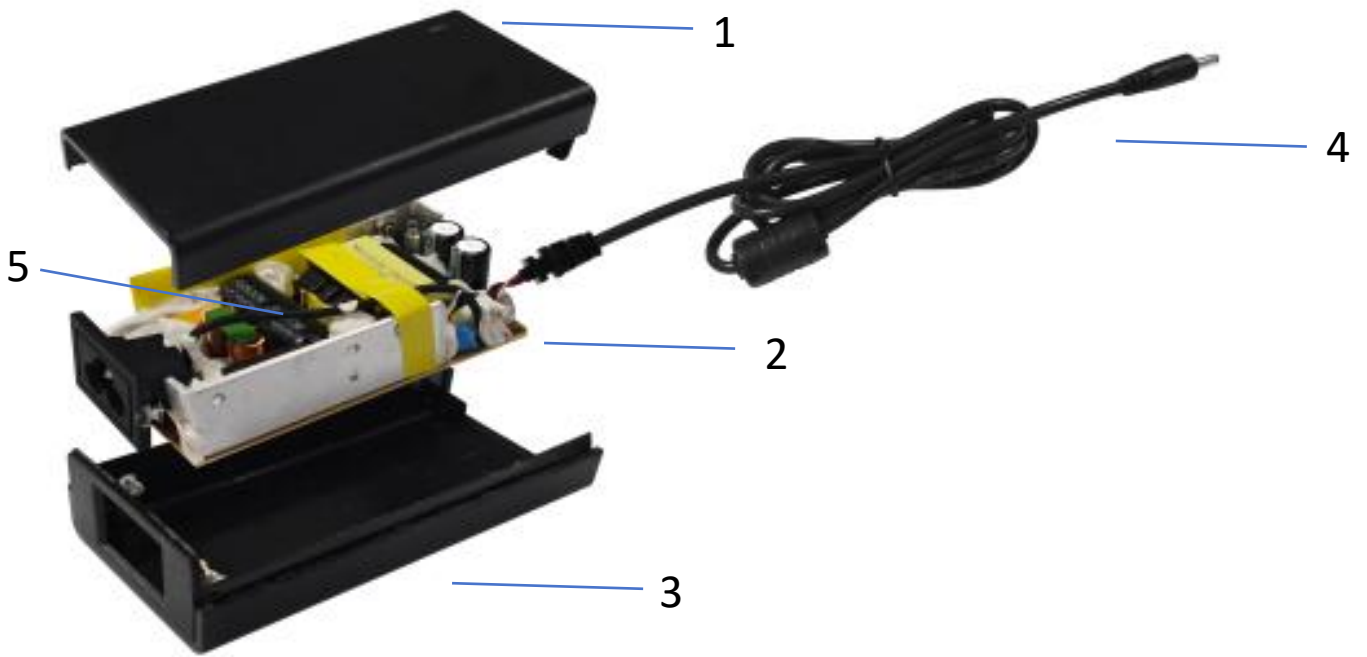
Separate 9: Remove Part 11, unscrew all screws(8pcs) on Part 17 to take out the Part 12.



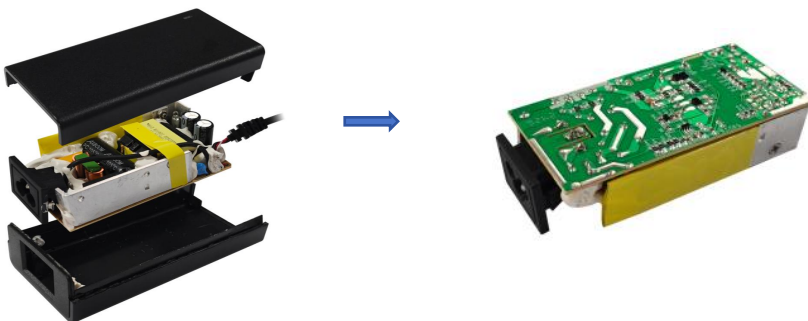


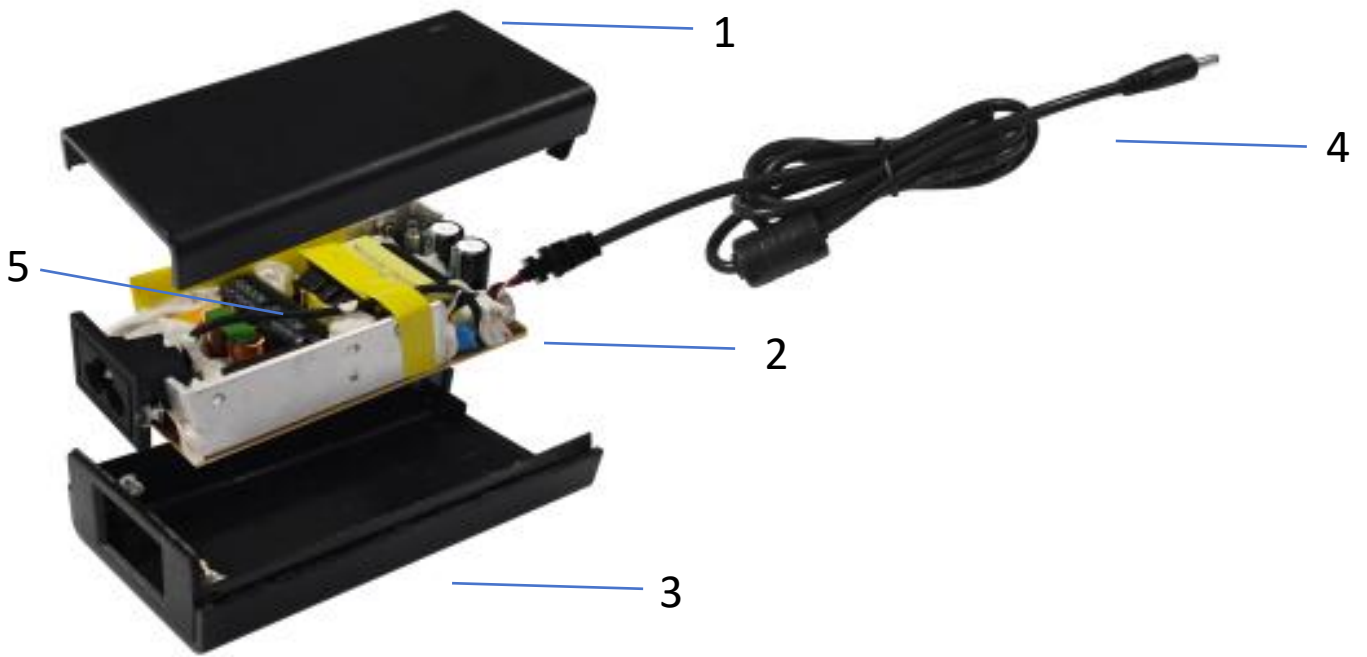
Separate 10: Remove Part 11 and Part 10 to take out the Part 20.



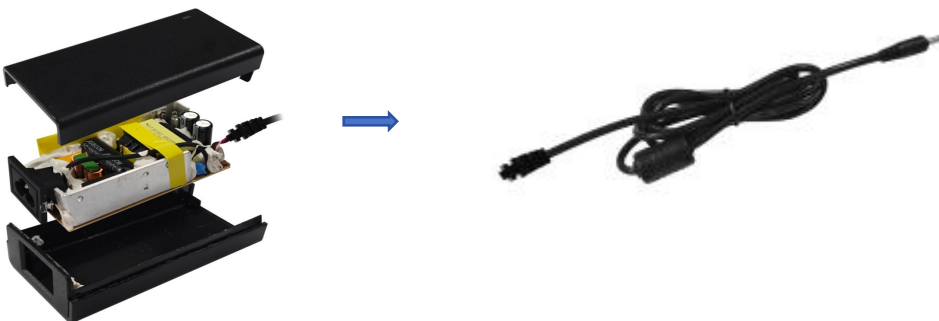


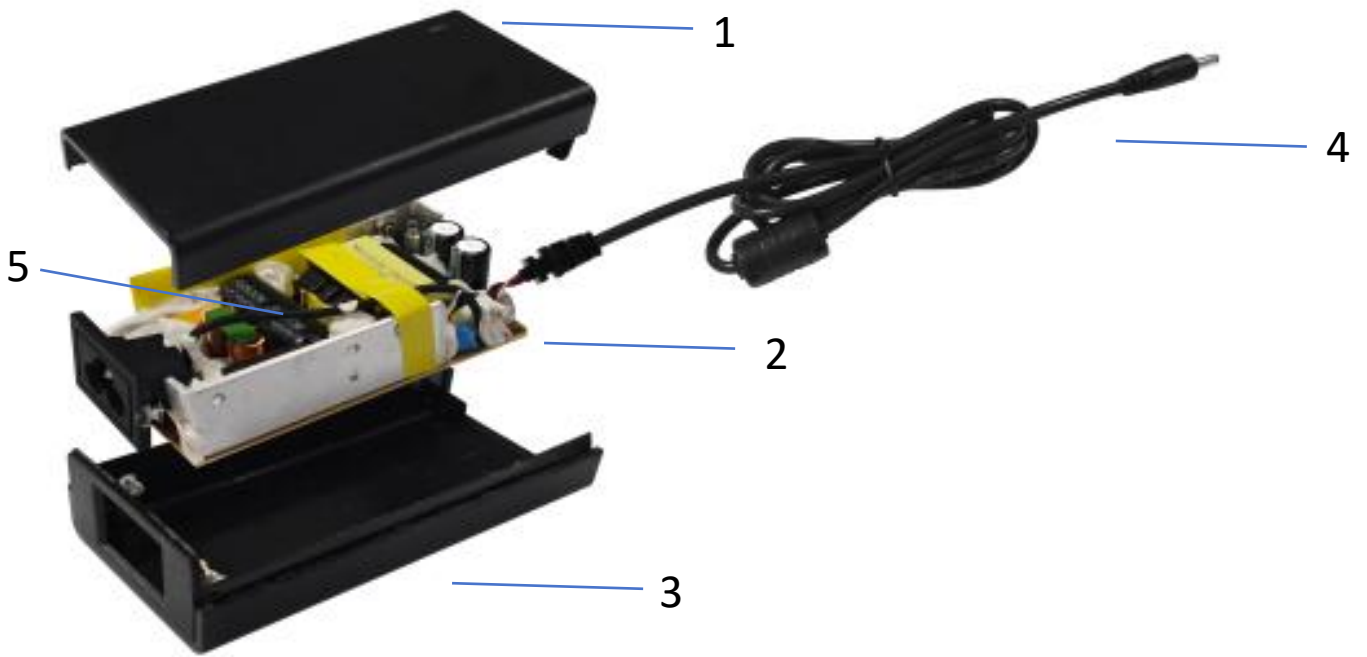
Separate 11: Pry open Part 1 and Part 3 to take out the Part 2.





Separate 12: Pry open Part 1 and Part 3 to take out the Part 4.





Separate 12: Cut (Soldered Joint \times 2) to take out the part 5 from 2.

