

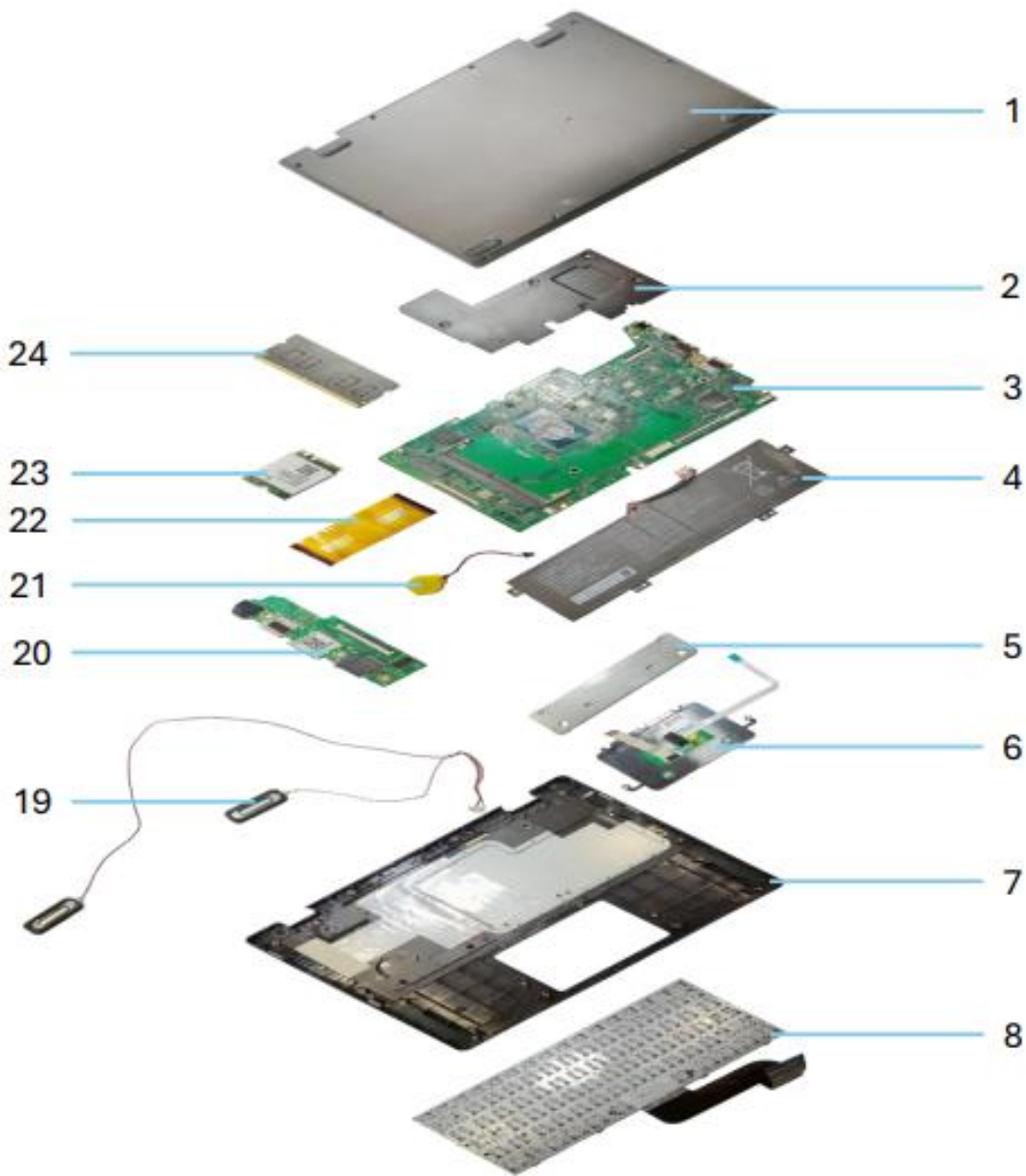
T140J Dismantling Process and Special Handling Needs

Notebook

No.	Name	Quantity	Annex VII Materials	Page
1	Battery	1	Batteries	2
2	Button Battery	1	Batteries	3
3	RAM	1	Printed Circuit Assemblies > 10 cm ²	3
4	Wi-Fi Module	1	Printed Circuit Assemblies > 10 cm ²	5
5	Main Board	1	Printed Circuit Assemblies > 10 cm ²	6
6	IO board	1	Printed Circuit Assemblies > 10 cm ²	6
7	Keyboard	1	Printed Circuit Assemblies > 10 cm ²	7
8	Touchpad	1	Printed Circuit Assemblies > 10 cm ²	8
9	LCD	1	LCD's > 100 cm ²	9
10	Camera	1	Printed Circuit Assemblies > 10 cm ²	10

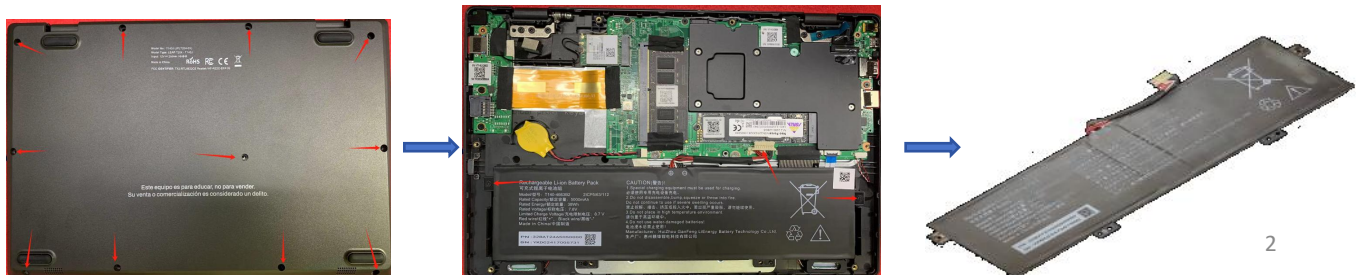
Adapter

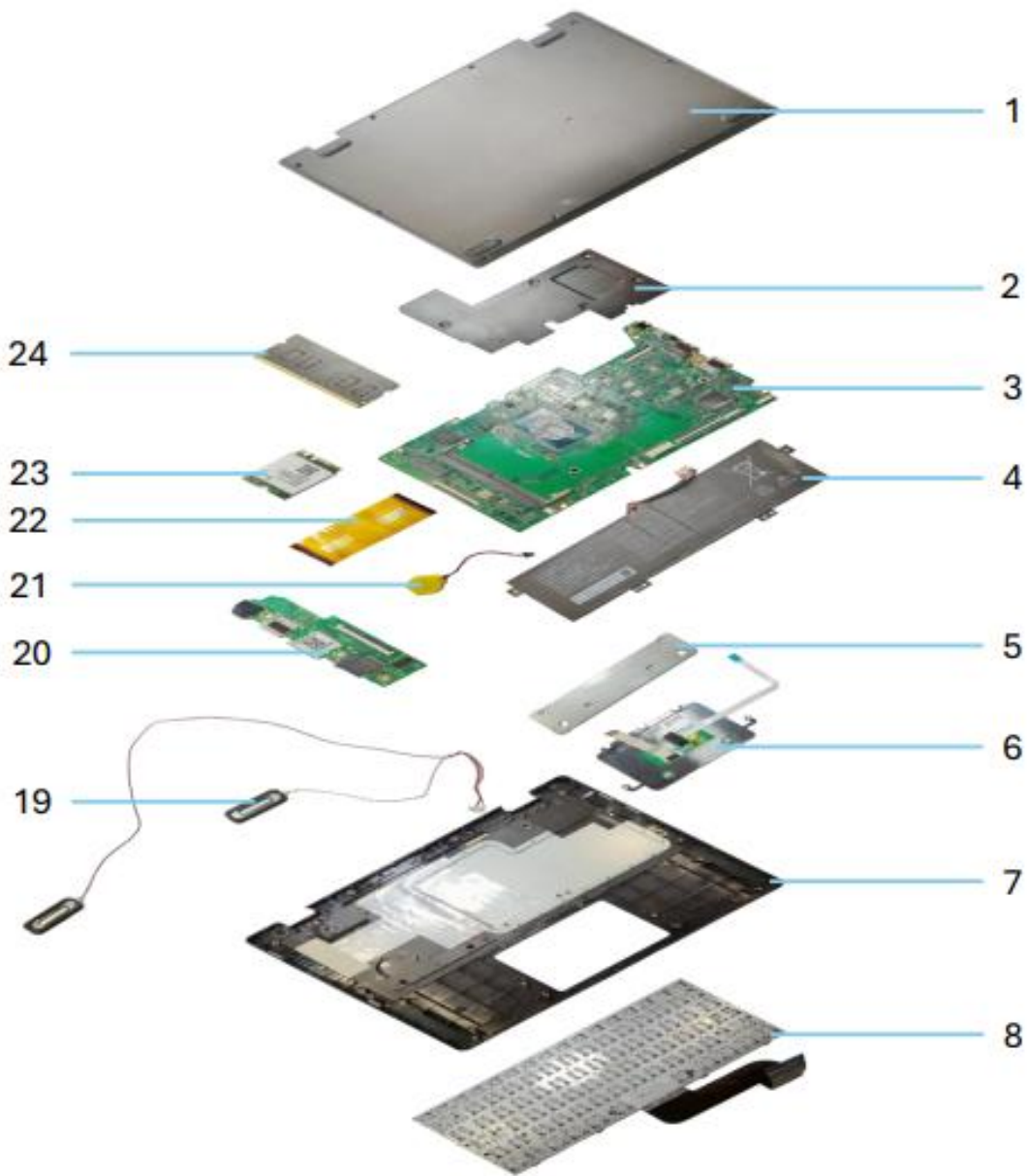
No.	Name	Quantity	Annex VII Materials	Page
1	PCB	1	Printed Circuit Assemblies > 10 cm ²	11
2	Cable	1	External Electric Cables	12



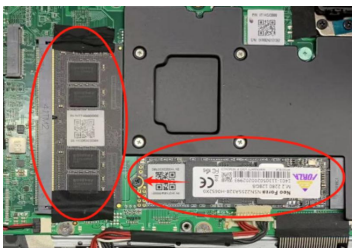
Separate 1: Unscrew all screws(11pcs) to take out the Part 1.

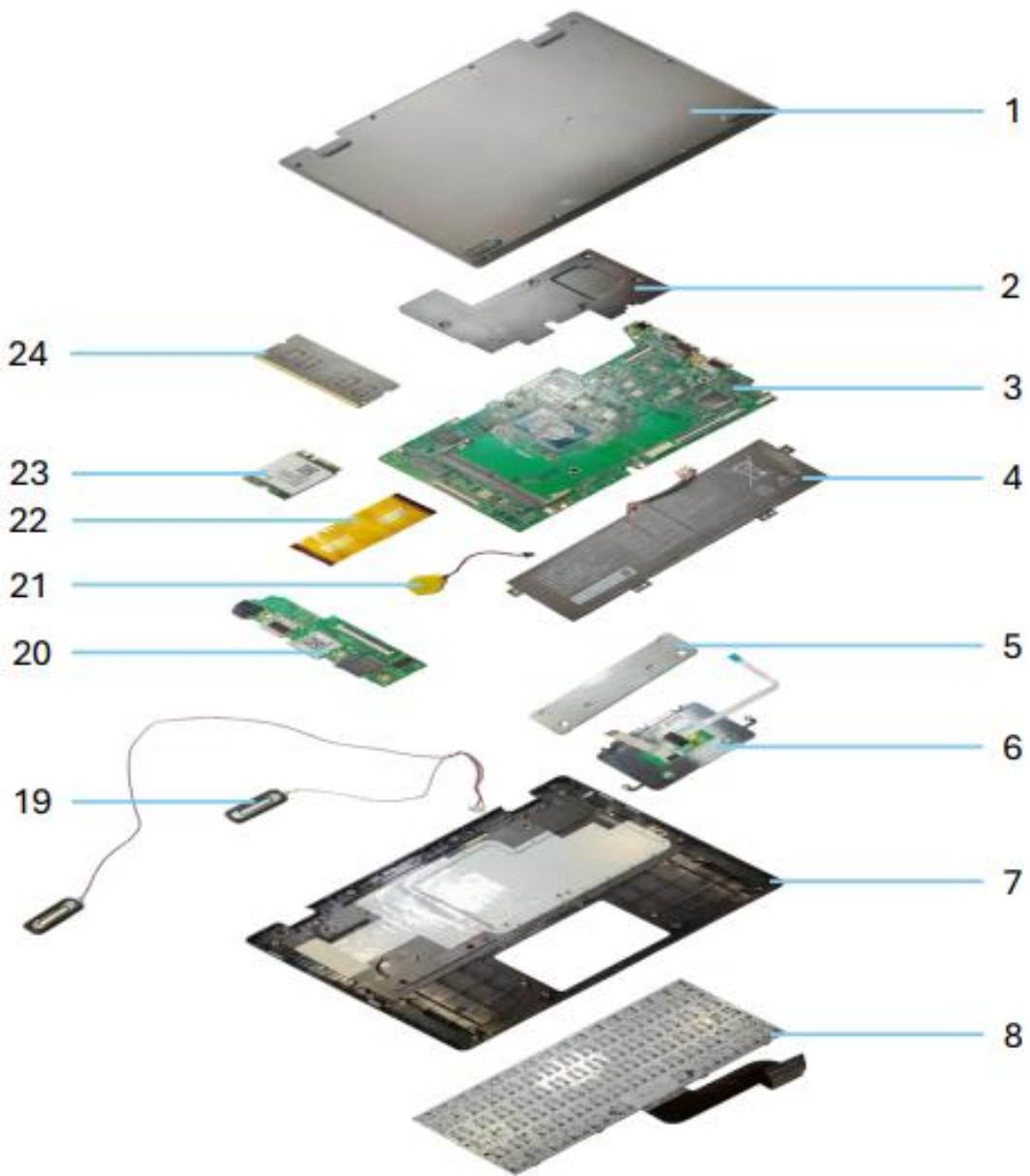
Separate 2: Unscrew all screws(2pcs) and unplug the cable to take out the Part 4.



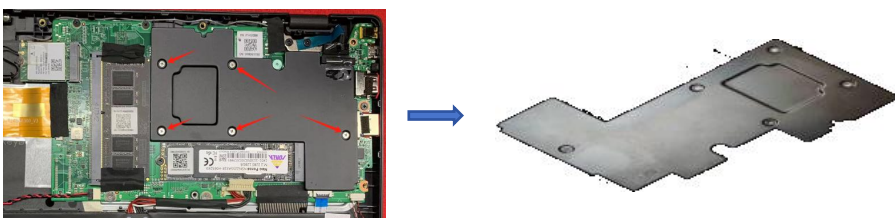


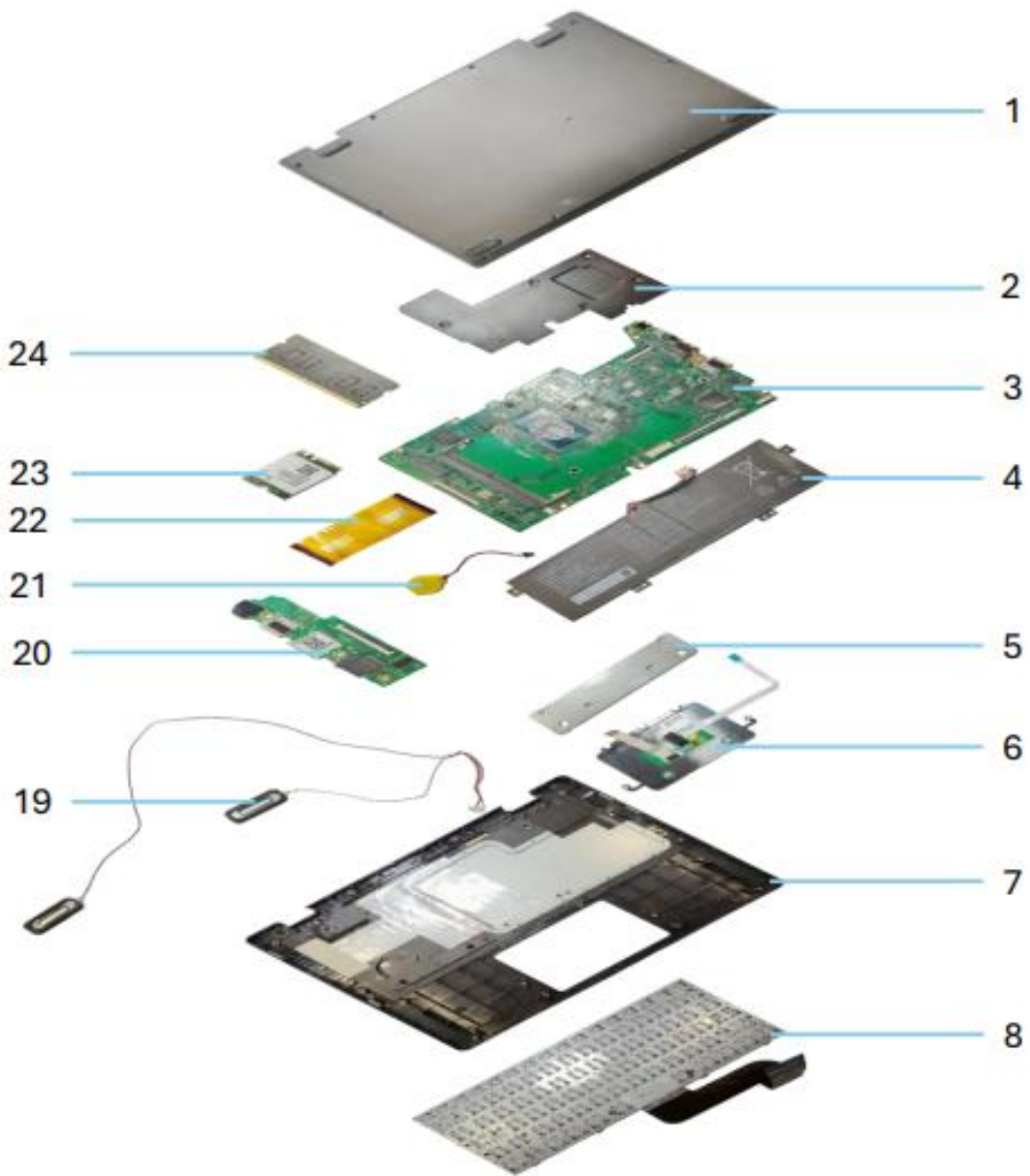
Separate 3: Unscrew all screws(1pcs) to take out the Part 22 and Part 24.



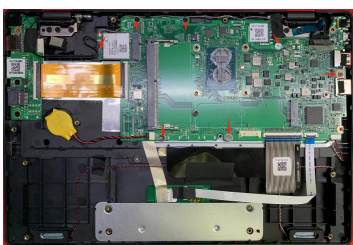


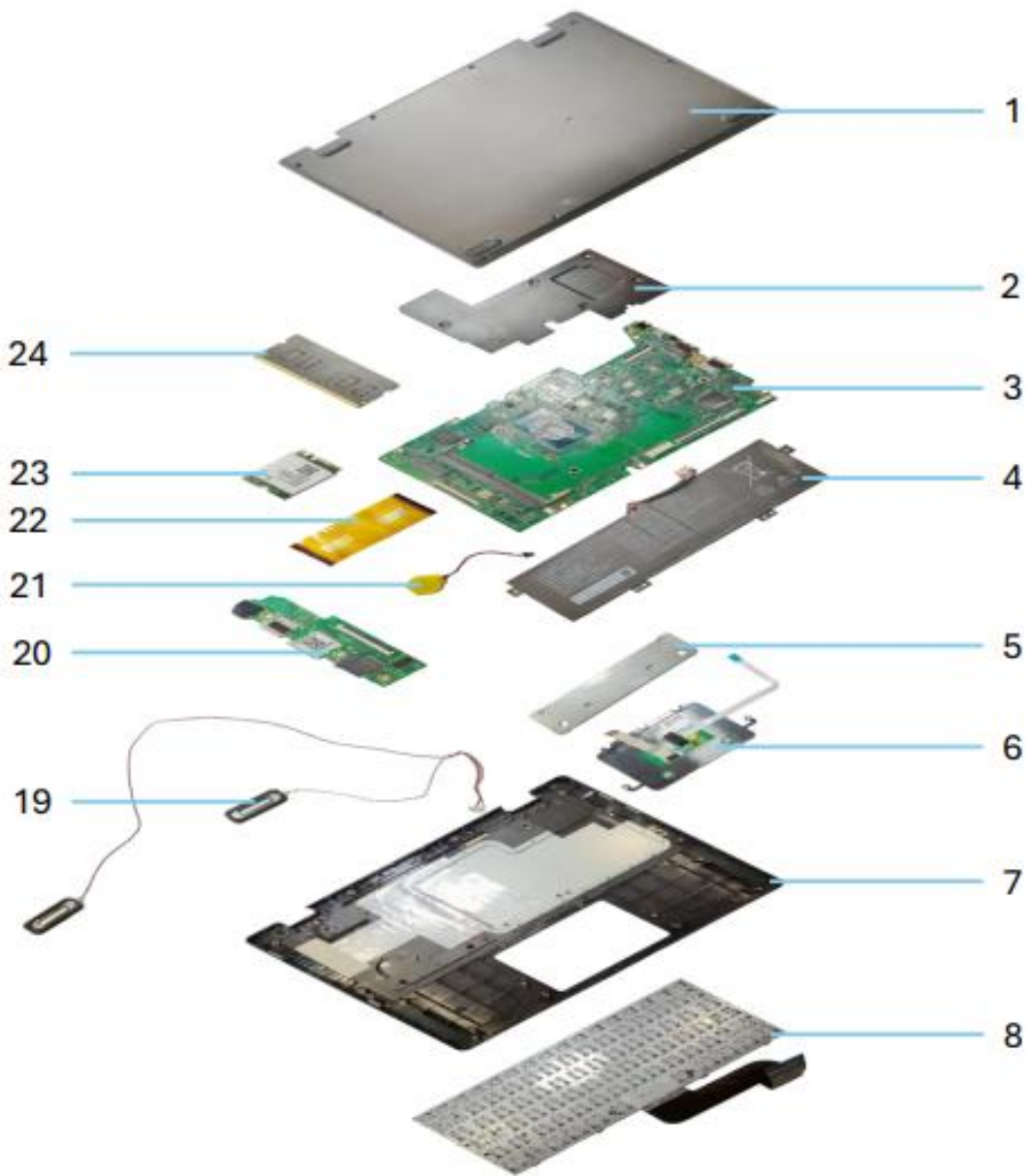
Separate 4: Unscrew all screws(5pcs) to take out the Part 2.





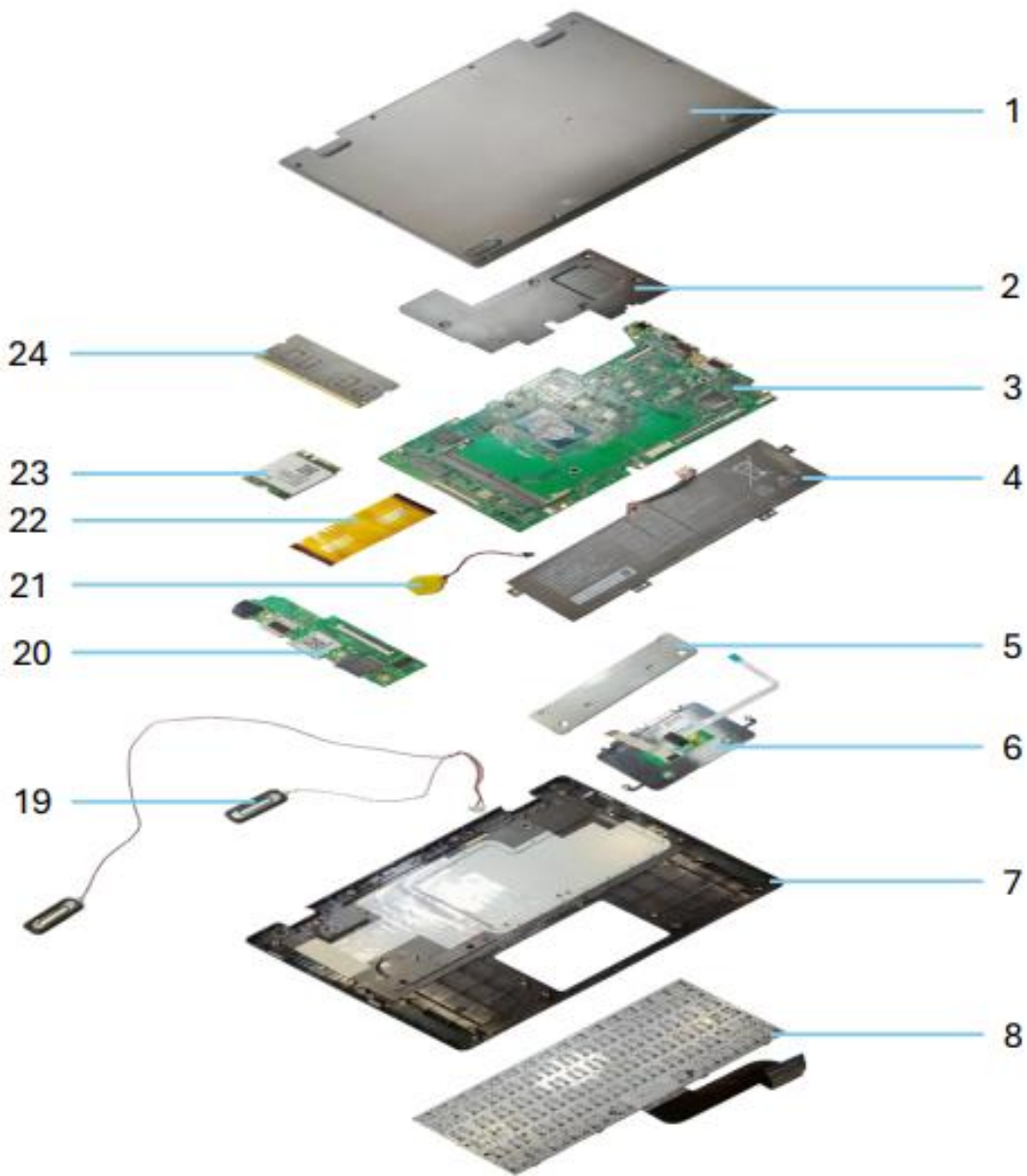
Separate 5: Unscrew all screws(1pcs) to take out the Part 23.



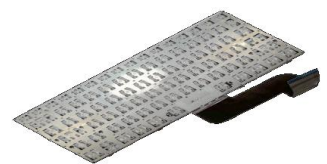


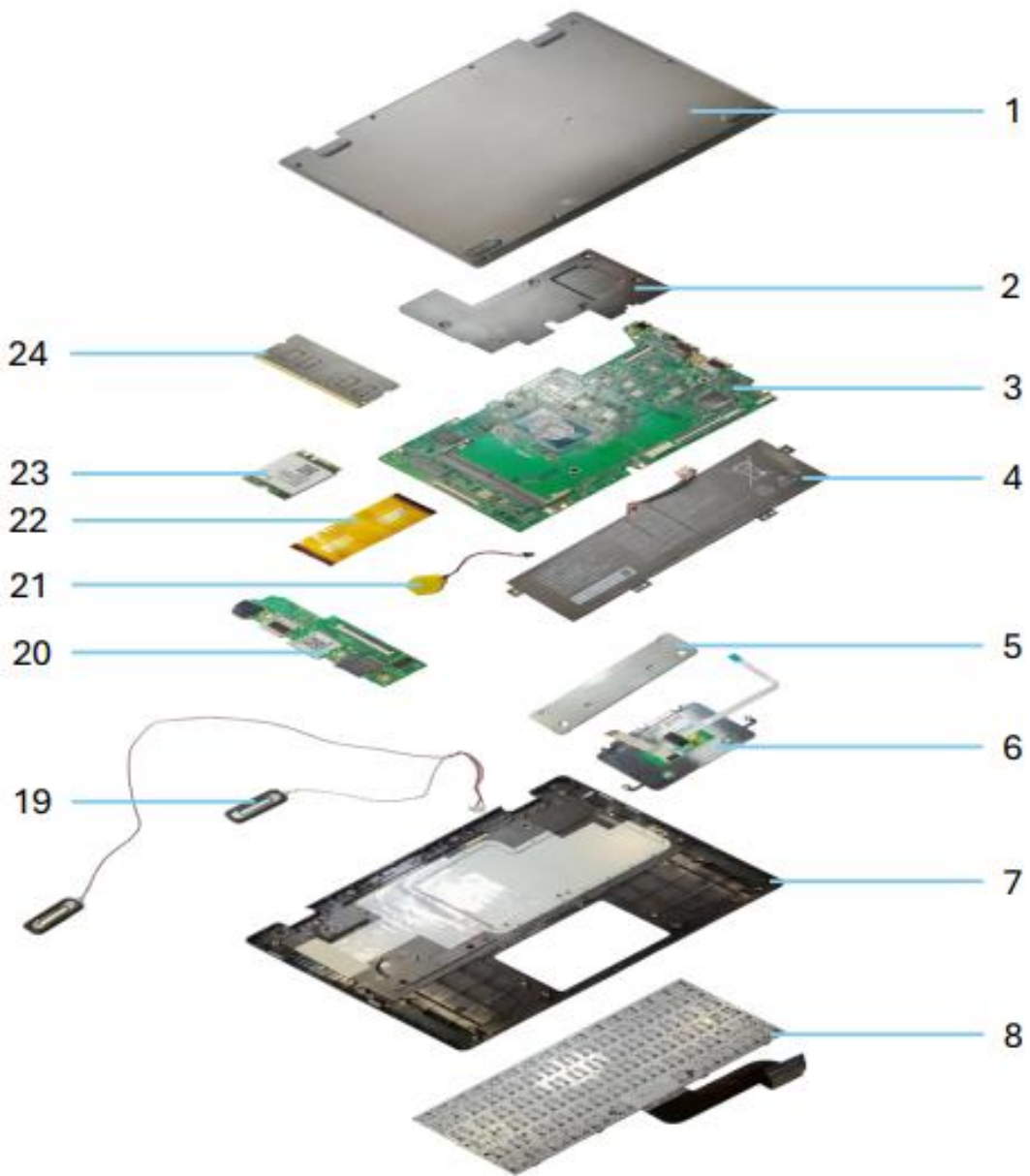
Separate 6: Unscrew all screws(8pcs) and unplug the cables to take out the Part 3 and Part 20.



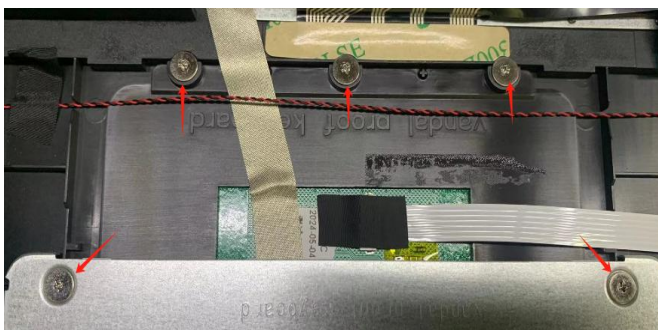


Separate 7: Unscrew all screws(2pcs) on part 7 to take out the Part 8.



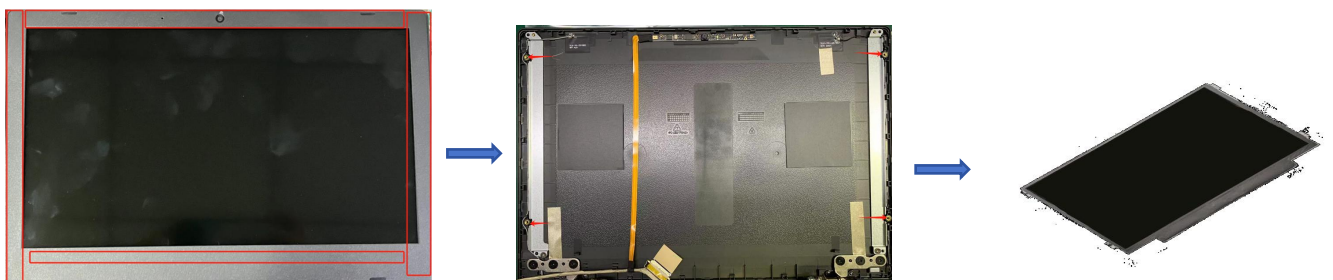


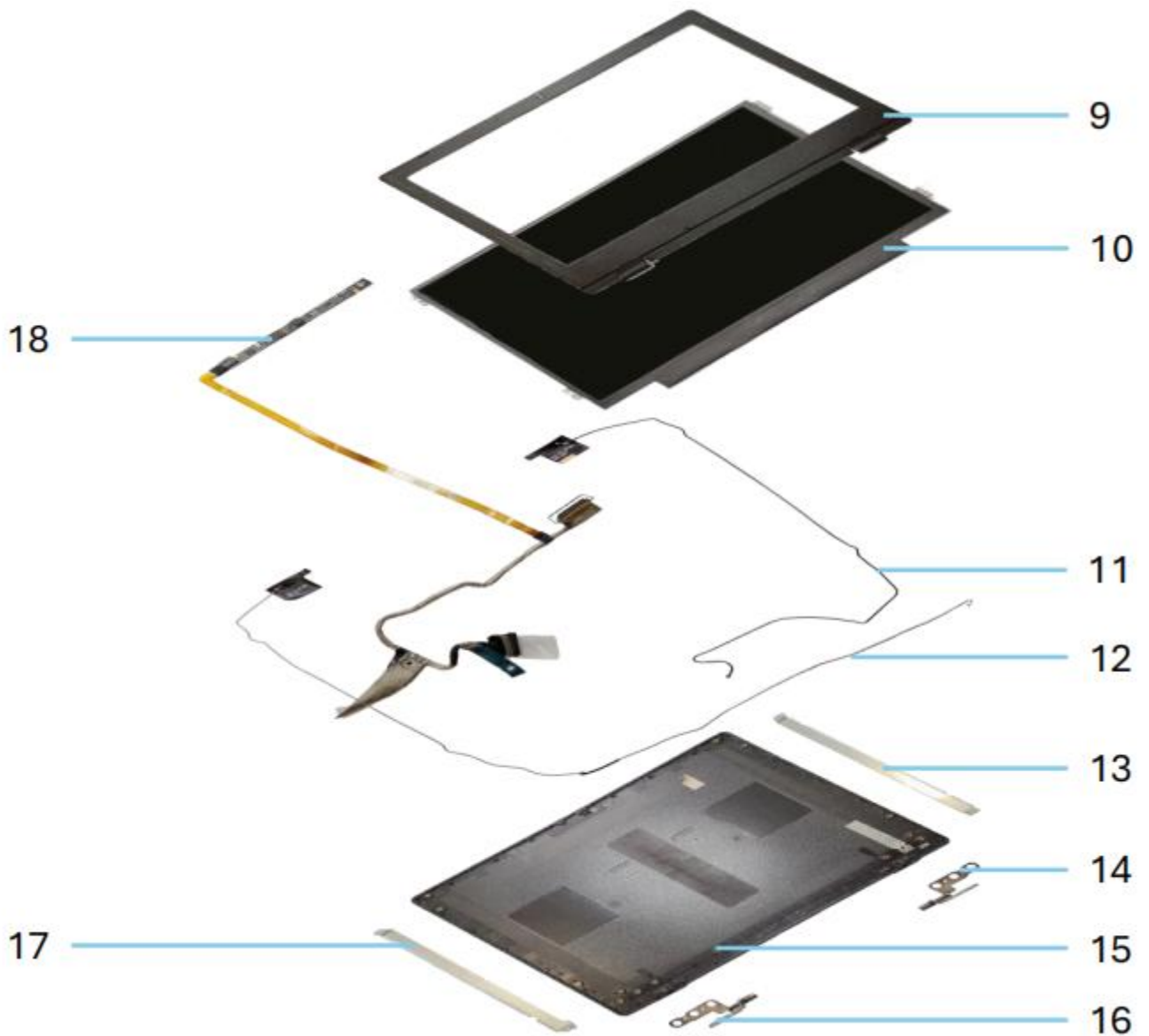
Separate 8: Unscrew all screws(5pcs) to take out the Part 6.



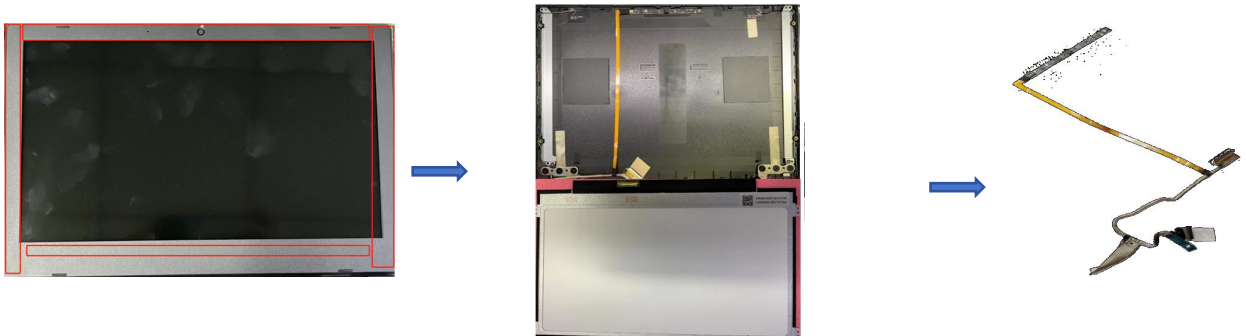


Separate 9: Remove Part 9, unscrew all screws(4pcs) on Part 15 to take out the Part 10.





Separate 10: Remove Part 9 and Part 10 to take out the Part 18.





Separate 11: Pry open Part 1 and Part 3 to take out the Part 2.





Separate 12: Pry open Part 1 and Part 3 to take out the Part 4.

